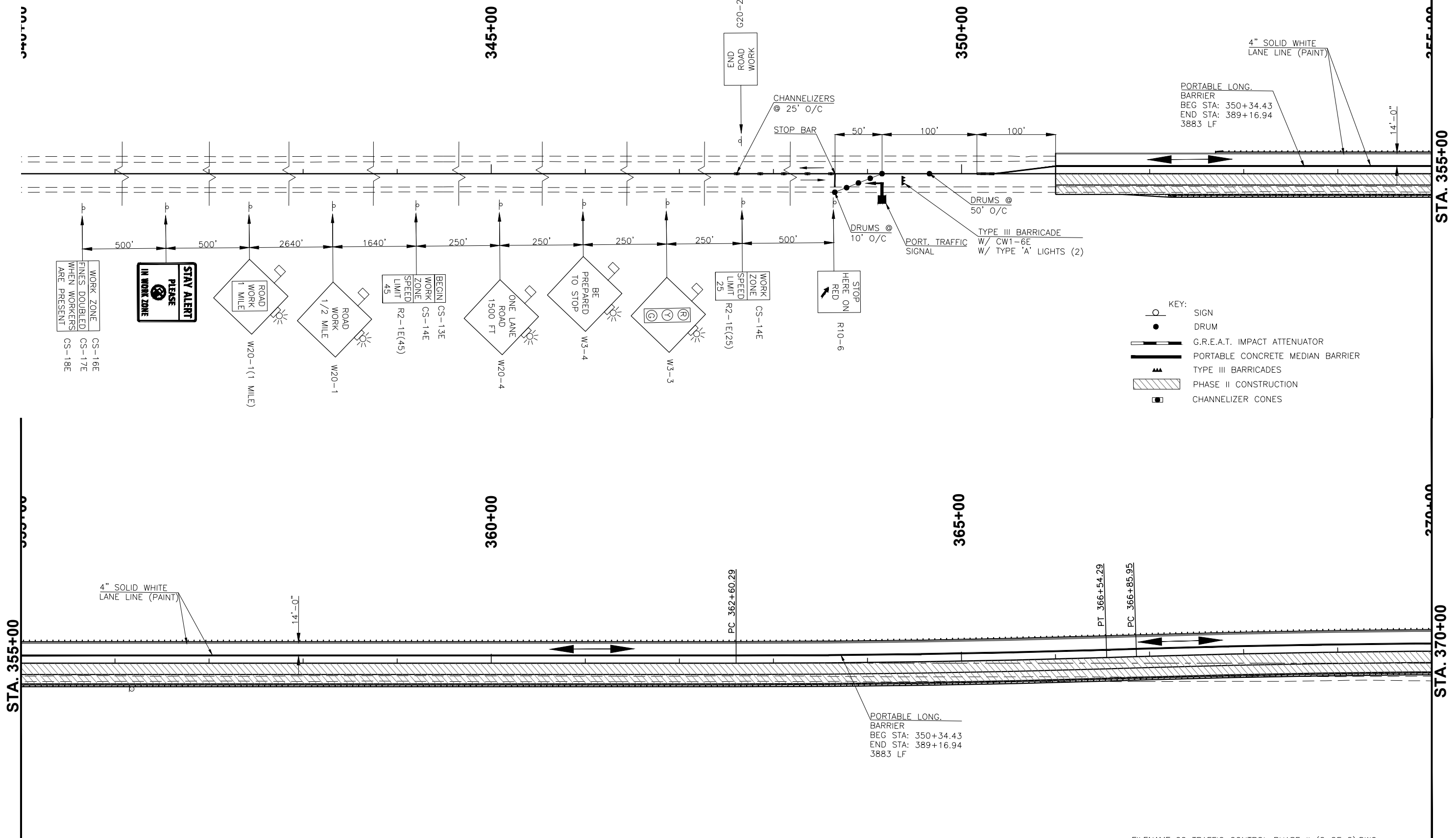


DESCRIPTION	REVISIONS	DATE



FILENAME: 20 TRAFFIC CONTROL PHASE II (2 OF 2).DWG

DESIGN	C.W.T.	SH-48 OVER CIMARRON RIVER	CREEK COUNTY
DRAWN	C.W.T.	<b>TRAFFIC CONTROL PHASE II (1 OF 2)</b>	
CHECKED	S.N.H.		
CEC		STATE JOB NO. 27925(04)	SHEET NO. 19